

Countess Road Walking and Cycling Scheme Proposals

Max Longley, Sustrans.
20th July 2022



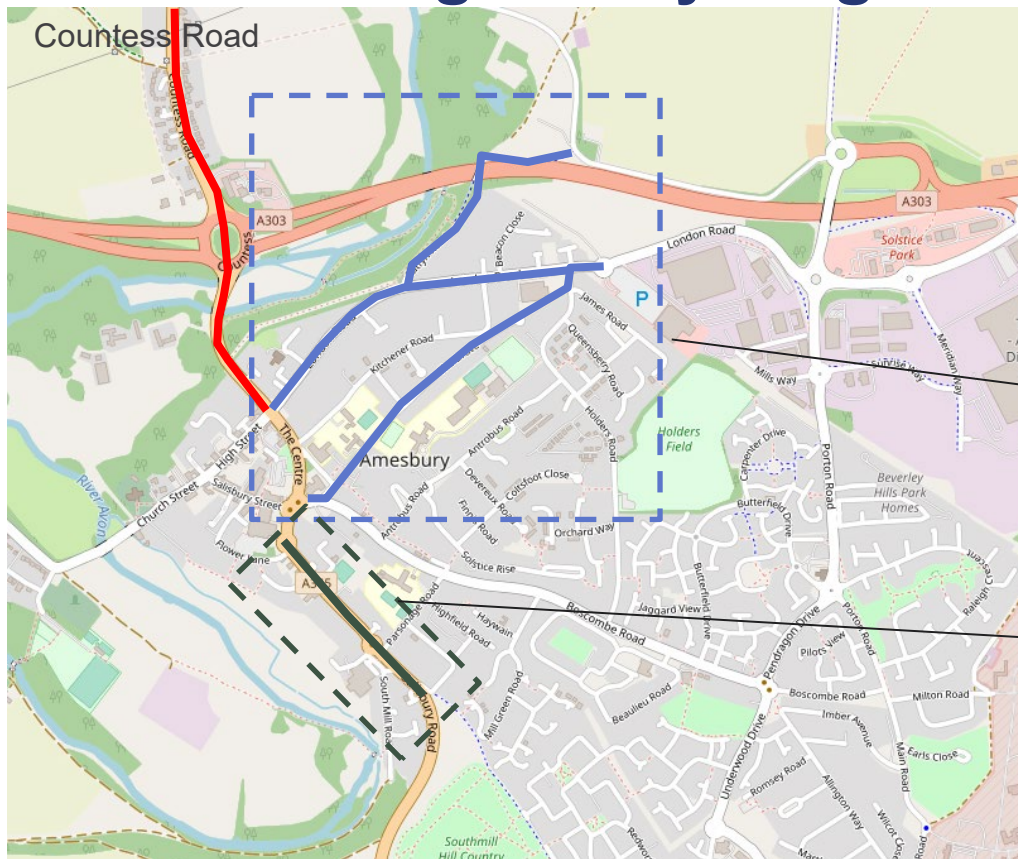
Setting the context

- **National Highways A303 Stonehenge scheme:**
 - **Proposed tunnel and extension of dual carriageway to alleviate traffic congestion**
 - **Creates a significant opportunity to improve walking and cycling facilities in and around Amesbury.**
- **High local benefits:**
 - **Cycle tourism**
 - **Local military community in Larkhill and Durrington**

Countess Road

- Key transport corridor:
 - Bridges the gap between Woodhenge and Amesbury High Street.
 - High utility and tourist trip potential.
- Connects to National Cycle Network Route 45 which continues south to Salisbury.
- Priority inter-urban route identified in Wiltshire's draft Local Cycling and Walking Infrastructure Plan (LCWIP)

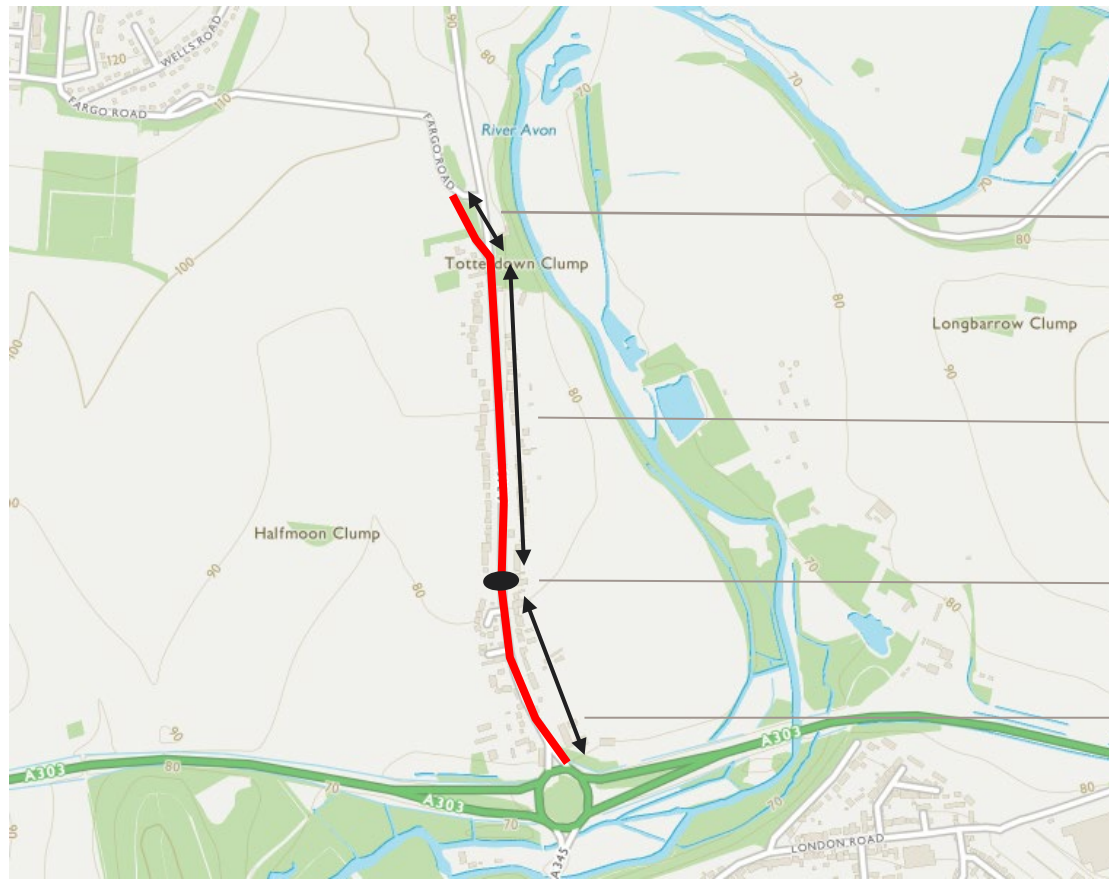
Wider walking and cycling strategy



National Highways funded feasibility study on multiple route: Ratfyn Road, London Road, Holders Lane, The Drove and Cold Harbour – establish options for improvements to walking and cycling facilities

Outline design of Salisbury Road – improvements to walking and cycling facilities

Countess Road North



Resurface and widen existing path

New 3.0m wide shared walking and cycling facility on western footway

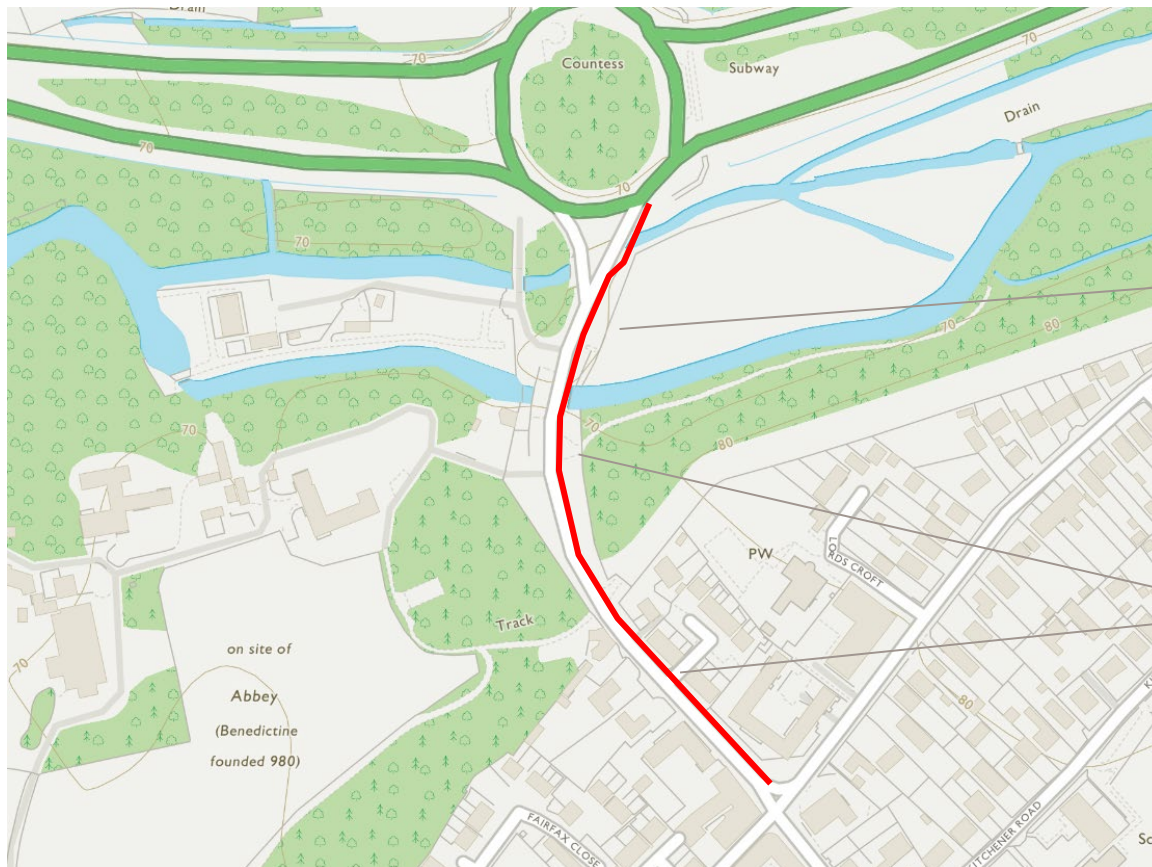
New shared signal controlled crossing

New 2.5m wide segregated cycle facility on eastern parking bays/footway

Countess Road North



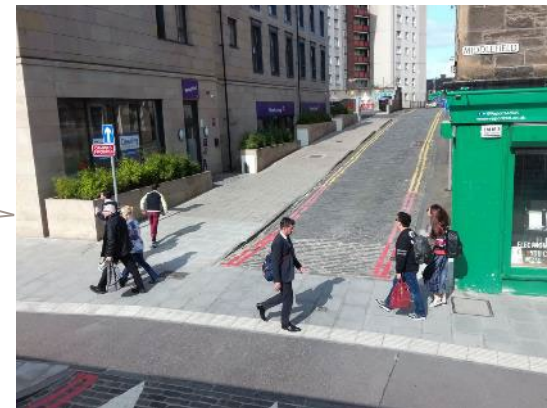
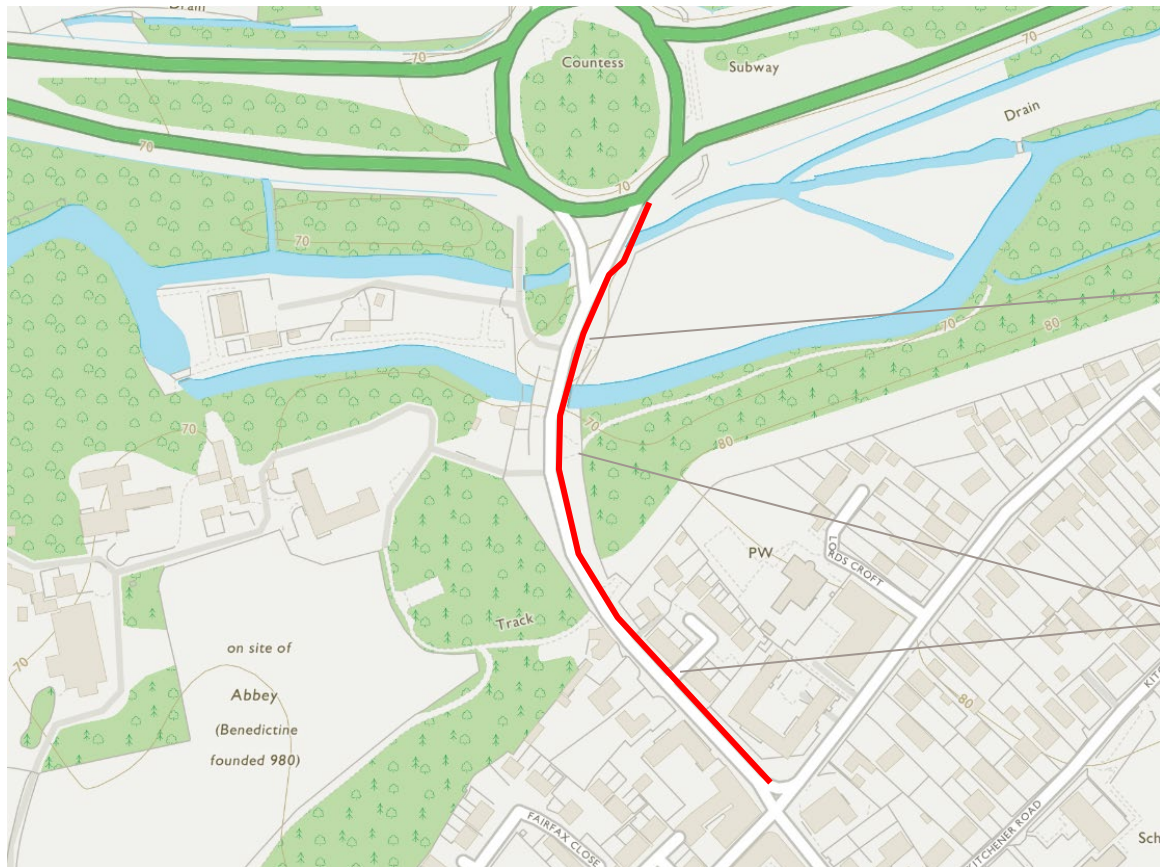
Countess Road South



New 2.5m-3.0m wide shared segregated walking and cycling facility on eastern footway

Continuous footway crossings at side roads

Countess Road South



Constraints

- Ongoing discussions with landowners on Countess Road to acquire additional space:
 - 109 and 111 Countess Road
 - 2A Countess Road (Housing Association)
- Acquisition of small sections of land adjacent to the highway will ensure that the proposed facilities meet latest cycle design standards (LTN 1/20).



Existing structure on Countess Road South

Sustrans is the charity making it easier for people to walk and cycle.

We connect people and places, create liveable neighbourhoods, transform the school run and deliver a happier, healthier commute.

Join us on our journey.

www.sustrans.org.uk

Registered Charity No. 326550 (England and Wales) SC039263 (Scotland)
VAT Registration No. 416740656.

