

**Wiltshire and Swindon Minerals Development Control Policies
Development Plan Document: 2006 – 2026**

Schedule of Proposed Changes to the Submission Draft Document

January 2009



1. Background

- 1.1 The purpose of the Wiltshire and Swindon Minerals Development Control Policies (DPD) is to provide specific guidance and practical advice to developers preparing proposals for future minerals development over the period up to 2026. Within the context of the emerging Wiltshire and Swindon Minerals and Waste Development Framework (MWDF), the document should be read in conjunction with the Minerals Core Strategy DPD and forms a vital role in helping to define the management of new development over the next twenty years. However, the MWDF is precisely that – a compendium of documents covering ‘strategy’, ‘development control’ and ‘site allocations’. For further details about the MWDF and more specifically the documents prepared to date, please visit: <http://www.wiltshire.gov.uk/planning-home>
- 1.2 The final draft of the Minerals Development Control Policies DPD was submitted to the Secretary of State in July 2008 and is presently the subject of an independent Examination process; the purpose of which is to assess whether the DPD is sound. An Inspector has been appointed by the Secretary of State to conduct the Examination and once all aspects of this process have been concluded, he will submit a report with recommendations that are binding on the Councils.
- 1.3 To assist the Examination process and to allow representors to present their evidence in public, a series of hearing sessions were programmed. These sessions were conducted on Tuesday 27th January 2009. Prior to the hearing sessions, the Inspector posed several questions to the Councils (the list of Main Matters). In response, the Councils presented a series of Position Statements. These Statements along with the cases of evidence presented by the representors formed the basis for the Hearings.
- 1.4 In the light of the statements and evidence presented to the Inspector prior to and during the hearings, the Councils drafted and re-worked a Schedule of Proposed Changes to address issues with the submitted draft Minerals Development Control Policies DPD. The schedule may be inspected online at <http://www.wiltshire.gov.uk/planning-home/>

2. Why is there a further period of public consultation?

- 2.1 The Councils consider that many of the changes proposed are minor wording changes that provide additional clarification and hence do not raise new issues or result in questions as to the soundness or sustainability of the submitted document. However, the Inspector does not necessarily share this view as he is not able to recommend changes to make the DPD sound unless those changes themselves meet the tests of soundness. This means that he must be satisfied that there has been appropriate and meaningful public consultation.
- 2.2 The Inspector has recommended that the Councils' Schedule of Proposed Changes are subject to a further 6 week period of public consultation. He has also suggested that it would be desirable, if not essential, to provide an opportunity for public comment on the suggested changes.
- 2.3 Please bear in mind that the Inspector has requested further public consultation **only** on the changes to the DPD proposed by the Councils; this is not another opportunity to revisit points raised at the submission stage of consultation or during the Hearing sessions.
- 2.4 All duly made comments on the Schedule of Proposed Changes will be forwarded to the Inspector for detailed consideration. Should it be necessary, the Councils have made provision to hold an additional hearing session in April 2009 to allow consideration of comments received to the Schedule of Proposed Changes. Details relating to any additional hearing session will be advertised and made available to all interested parties and posted on the website.

3. How to comment:

- 3.1 Please read this consultation paper, in conjunction with documents available on the Council website, and use the Representation Form provided to make comments. To be considered as duly made, comments must be returned to the address below by the end of the consultation period.

4. Submitting Comments:

4.1 The Deadline for receiving comments is: **Noon on Monday 23rd March 2009.**

Please return the form to:

**Mr G Winslow
Team Leader, Minerals & Waste Policy
Environmental Services Department
Wiltshire County Council
Trowbridge
BA14 0HD
Email: mineralsandwastepolicy@wiltshire.gov.uk**

**Wiltshire and Swindon Minerals Development Control Policies DPD Submission Draft:
Schedule of Proposed Changes** *(Note: Ref Numbers highlighted in red and in brackets relate to the proposed changes submitted prior to the hearing session)*

Ref No.	Document ref.	Proposed Change	Reason for Proposed Change
PC001	Paragraph 1.4	Amend 3 rd Sentence to read: In turn, the policies within the <u>Minerals</u> Core Strategy <u>DPD</u> and this Development Control Policies DPD will be used to determine the location and delineation of allocated sites for minerals development in the <u>subsequent</u> Site Allocations DPDs <u>(as deemed appropriate)</u> .	To precisely define the role of the Minerals Core Strategy and Development Control Policies DPDs in relation to the preparation of Site Allocations DPDs. The new Wiltshire Council will operate with three separate Core Strategy DPDs (as set out within the approved Wiltshire LDS, January 2009) and hence there is a need to provide precise references to documents within the context of the wider Local Development Framework.
PC002 <i>(Please also refer to Appendix 2: PC044 (k))</i>	Page 5, Figure 1	Amend the Figure: Delete “Salsibury” and replace with “ <u>Salisbury</u> ”	Minor typographical correction.

Wiltshire and Swindon Submission Draft Minerals Development Control Policies DPD Examination: Schedule of Proposed Changes

Ref No.	Document ref.	Proposed Change	Reason for Proposed Change
PC003	Paragraph 2.16	<p>Amend 4th Sentence to read:</p> <p>Where required, site specific AAs will be undertaken for the <i>during the preparation of Minerals Site Allocations DPDs (e.g. the Aggregate Minerals Site Allocations DPD).</i> Planning applications on sites that are not contained within the Site Allocations DPDs will be required to undertake and submit an AA where it is deemed necessary.</p>	<p>The proposed amendments allow the Councils flexibility to prepare more than one Site Allocations DPD, as deemed appropriate. In the first instance, the intention of the Councils is to prepare an Aggregate Minerals Site Allocations DPD, however the Councils may choose to prepare further Site Allocations DPDs to cover other mineral types – e.g. Building Stone, Cement Raw Materials etc. Clearly, any decision to prepare such documents will first need to be conveyed in subsequent revisions to the Local Development Scheme. At this stage no commitment has been made to prepare additional Site Allocations DPDs but the Councils would wish to reserve the right to do so.</p>

Wiltshire and Swindon Submission Draft Minerals Development Control Policies DPD Examination: Schedule of Proposed Changes

Ref No.	Document ref.	Proposed Change	Reason for Proposed Change
PC004 (PC001)	Paragraph 3.6	In third sentence delete “primary aggregates” and replace with “ <u>sand and gravel</u> ”	To ensure consistency across the document
PC005	Paragraph 4.9	Amend 2 nd Sentence to read: Whether it be through abstraction of water for mineral washing and processing, the culverting of water courses and dewatering of areas where minerals will be worked below the water table, or simply the storage of fuels and other chemicals necessary for the development, there will be potential for adverse impacts to water quality and water levels both within and beyond <u>the</u> boundaries of a site.	Minor typographical correction.
PC006 (PC003)	Paragraph 4.17	Delete third and fourth sentences.	Amendments to text to reflect the fact that Mineral Consultation Areas will not be required when the new Wiltshire unitary authority is born in April 2009.
PC007 (PC004)	Paragraph 4.18	Delete “MCAs” and replace with “ <u>MSAs</u> ”	Amendments to text to reflect the fact that Mineral Consultation Areas will not be required when the new Wiltshire unitary authority is born in April 2009.
PC008 (PC005)	Paragraph 4.19	Delete “MCA” and replace with “ <u>MSA</u> ”	Amendments to text to reflect the fact that Mineral Consultation Areas will not be required when the new Wiltshire unitary authority is born in April 2009.

Wiltshire and Swindon Submission Draft Minerals Development Control Policies DPD Examination: Schedule of Proposed Changes

Ref No.	Document ref.	Proposed Change	Reason for Proposed Change
PC009 (PC006)	Paragraph 4.20	Delete "MCAs" and replace with " <u>MSAs</u> "	Amendments to text to reflect the fact that Mineral Consultation Areas will not be required when the new Wiltshire unitary authority is born in April 2009.
PC010 (PC007)	Paragraph 4.21	Delete "MCAs" and replace with " <u>MSAs</u> "	Amendments to text to reflect the fact that Mineral Consultation Areas will not be required when the new Wiltshire unitary authority is born in April 2009.
PC011 (PC008)	Policy MDC4, first paragraph	Amend to read: "Proposals for development within Minerals Consultation Areas and Minerals Safeguarding Areas, as defined on the Proposals Map..."	Amendments to text to reflect the fact that Mineral Consultation Areas will not be required when the new Wiltshire unitary authority is born in April 2009.
PC012	Paragraph 5.4	Amend 4 th Sentence to read: Assessments have also been produced for the three AONBs; the <u>former</u> Districts of Kennet, Salisbury, North and West Wiltshire; Swindon Borough; the Army Training Estates on Salisbury Plain and the Cotswold Water Park.	To reflect the new governance arrangements in Wiltshire (as of 1 st April 2009).

Ref No.	Document ref.	Proposed Change	Reason for Proposed Change
PC013	Page 21	<p>Insert new paragraph after paragraph 5.9 to read:</p> <p>5.10 <u>“Unless effectively managed, minerals development in Wiltshire and Swindon could potentially result in adverse impacts on features of biodiversity and geological interest both within and adjacent to the Plan area. The Councils consider features of biodiversity and geological interest to comprise:</u></p> <p><u>Sites and Species of International Importance</u></p> <ul style="list-style-type: none"> • <u>Special Areas of Conservation (SACs)</u> • <u>Special Protection Areas (SPAs)</u> • <u>Ramsar sites</u> • <u>European Protected Species¹</u> <p><u>Sites and Species of National Importance</u></p> <ul style="list-style-type: none"> • <u>Sites of Special Scientific Interest</u> • <u>Species of Principal Importance²</u> <p><u>Sites and Species of Regional and Local Importance</u></p> <ul style="list-style-type: none"> • <u>Regionally Important Geological and Geomorphological Sites</u> • <u>Local Biodiversity Action Plan habitats and species (including those of the Wiltshire, Swindon and Cotswold Water Park BAPs)³</u> • <u>County Wildlife Sites (including Semi Natural Ancient Woodlands).</u> • <u>Local Nature Reserves.</u> • <u>The Great Western Community Forest</u> <p><u>And any area / habitat that could be considered to be essential to connect / support habitats or species such as those listed above.”</u></p>	<p>To provide clarity on the Councils’ definition of features of biodiversity and geological interest.</p>

Wiltshire and Swindon Submission Draft Minerals Development Control Policies DPD Examination: Schedule of Proposed Changes

Ref No.	Document ref.	Proposed Change	Reason for Proposed Change
PC014 (PC009)	Page 21	Insert footnote attached to 'European Protected Species' in new paragraph (PC013) to read: "European protected species – Circular 06/2005, Annex A, Tables 2 and 3 of lists the species; (Schedule 2 and Schedule 4 of the Conservation (Natural Habitats &c.) Regulations 1994 identifies those species of the habitats directive applicable to the UK). "	To provide clarity on the Councils' definition of features of biodiversity and geological interest.
PC015 (PC010 – part of)	Page 21	Insert footnote attached to 'Species of Principal Importance' in new paragraph (PC013) to read: "Species of principal importance - Circular 06/2005, paragraphs 84 – 86 and Annex C lists the species and habitats of principal importance."	To provide clarity on the Councils' definition of features of biodiversity and geological interest.
PC016 (PC010 – part of)	Page 21	Insert footnote attached to 'Local Biodiversity Action Plan habitats and species' in new paragraph (PC013) to read: "Local BAP Species can be found in the relevant Local Biodiversity Action Plan <i>[note: habitats of principal importance are incorporated into the Wiltshire BAP habitats]</i> "	To provide clarity on the Councils' definition of features of biodiversity and geological interest.
PC017	Page 21, paragraph 5.11	Amend third sentence to read: "...Taking the lead from PPS9, Policy MDC6 identifies the need to promote the conservation of habitats and species in the widest sense through the implementation of Biodiversity Action Plans <u>(e.g. Wiltshire BAP, Swindon BAP, Cotswold Water Park BAP, etc)</u> and, where produced, Geodiversity Action Plans..."	To provide clarity on the Councils' definition of features of biodiversity and geological interest.

Wiltshire and Swindon Submission Draft Minerals Development Control Policies DPD Examination: Schedule of Proposed Changes

Ref No.	Document ref.	Proposed Change	Reason for Proposed Change
PC018	Policy MDC6	<p>Amend second and third paragraphs to read:</p> <p><u>“Proposals <i>The assessment must have particular regard to the need to maintain and / or enhance internationally and nationally designated features of biodiversity and/or geological interest, sites and species of international and national importance in accordance with the relevant statutory requirements.</i></u></p> <p><u>The assessment must also consider carefully the need to maintain and / or enhance and the following features of local <u>and</u> regional and international importance:</u></p> <ul style="list-style-type: none"> • European Protected Species • Wiltshire’s Local Biodiversity Action Plan habitats and species • County Wildlife Sites (including Semi Natural Ancient Woodlands). • Regionally Important Geological and Geomorphological Sites • Local Nature Reserves. • The Great Western Community Forest “ 	To provide clarity on the intention of Policy MDC6.
PC019 (PC011)	Paragraph 5.19	<p>Amend to read:</p> <p>“The historic environment can be broadly defined as <u>incorporating</u> all designated historic assets <u>of archaeological or cultural heritage importance,</u> including features of local historic <u>and</u> / or architectural interest and value, since these can make an important contribution to creating a sense of place, local identity and distinctiveness. Other important elements of the historic environment, <u>some of</u> which are often without any statutory protection, include <u>locally significant, but as yet, un-designated</u> other archaeological remains, locally listed buildings, <u>conservation areas, registered</u> parks and gardens, <u>historic battlefields, historic</u> landscape and townscape features², the historic character of the wider landscape / townscape <u>built environment</u>, as well as the potential for as yet unrecorded archaeology.”</p>	To provide clarity on the Councils’ definition of the features of the historic environment covered by MDC7.

Wiltshire and Swindon Submission Draft Minerals Development Control Policies DPD Examination: Schedule of Proposed Changes

Ref No.	Document ref.	Proposed Change	Reason for Proposed Change
PC020	Paragraph 5.20	Amend first sentence to read: “The diverse historic environment of Wiltshire and Swindon includes many features of <u>local</u> , national and international importance...”	To provide clarity on the Councils’ definition of the features of the historic environment covered by MDC7.
PC021	Paragraph 5.21	Amend second sentence to read: “National policy (PPG16, paragraph 8) outlines a <u>presumption in favour of the preservation in situ of nationally important remains and their settings, whether scheduled or not. It is important to note that archaeological sites and features do not have to be formally scheduled to be of national importance.</u> preference for undisturbed archaeological remains to be preserved in situ.	To provide clarity on the Councils’ definition of the features of the historic environment covered by MDC7.
PC022	Paragraph 5.22	Amend first and second sentences to read: “...the Confederation of British Industry have produced a code of practice ³ for mineral developers <u>to apply when planning proposals for minerals development.</u> and the <u>In addition, the</u> Minerals and Historic Environment Forum have <u>recently built upon this advice and</u> produced a practice guide ⁴ <u>setting out clear and practical advice on the archaeological evaluation of mineral development sites.</u> The Councils support the principles of both documents and will require developers submitting proposals <u>for new minerals development</u> to:”	To provide clarity on the Councils’ position on the historic environment.
PC023 (PC012)	Paragraph 5.22, third bullet point	Amend to read: “...Depending on the importance of the findings of the initial archaeological assessment, the Councils may seek financial <u>non-financial</u> contributions from the developer in the form of a legal agreement...”	Minor correction to text.

Wiltshire and Swindon Submission Draft Minerals Development Control Policies DPD Examination: Schedule of Proposed Changes

Ref No.	Document ref.	Proposed Change	Reason for Proposed Change
PC024	Page 25	Insert footnote attached to 'townscape features' in paragraph 5.20 to read: <i><u>"2 Townscape features can include: historic bridges, street furniture of historic or architectural interest (e.g. pillar boxes, railings, street lights, market crosses, clocks) and many other features that add to the quality and distinctiveness of local towns and villages."</u></i>	To provide clarity on the Councils' definition of the features of the historic environment covered by MDC7.
PC025	Paragraph 5.24	Amend third sentence to read: "In addition to archaeological assessment, proposals <u>for new minerals development</u> should assess the potential adverse impacts on the historic landscape and cultural heritage assets, including <u>registered</u> historic parks and gardens..."	To provide clarity on the Councils' definition of the features of the historic environment covered by MDC7.
PC026	Paragraph 5.24	Amend the reference to footnote "13" in the final sentence to superscript " ¹³ ".	To correct a typographical / formatting issue in relation to the use of Footnotes.
PC027	Paragraph 5.25	Amend to read: <i><u>"The principle objective of Policy MDC 7 seeks to ensure that Wiltshire and Swindon's historic environment is afforded the appropriate level of protection, enhancement and / or preservation in conformity with national and regional policy. The policy also provides advice to developers on how to assess the potential impacts of their proposals on known (i.e. designated) and / or potential features of archaeological importance. As part of the process of preparing planning applications for new development, Archaeological archaeological and Historic Landscape Assessments should be used by developers to inform the preparation of a mitigation strategy (please refer to Policy MDC1) for the proposed minerals development."</u></i>	To provide clarity on the scope and intent of MDC7.

Wiltshire and Swindon Submission Draft Minerals Development Control Policies DPD Examination: Schedule of Proposed Changes

Ref No.	Document ref.	Proposed Change	Reason for Proposed Change				
PC028	Policy MDC7	<p>Amend to read:</p> <p>“In the interest of protecting the rich historic character <u>environment</u> of Wiltshire and Swindon, proposals for minerals development will only be permitted where it can be demonstrated <u>through a process of assessment</u> that <u>historic assets</u> areas of archaeological or cultural heritage importance and their settings can be <u>appropriately</u> protected, enhanced and / or preserved.</p> <p>Proposals affecting sites of <u>historic assets</u> of known or potential archaeological importance must be accompanied by...”</p>	To provide clarity on the scope and intent of MDC7.				
PC029	Page 26, Policy Drivers Box	<p>Amend to read:</p> <p>“</p> <table border="1" data-bbox="562 762 1720 1034"> <thead> <tr> <th colspan="2" data-bbox="562 762 1720 799"><u>Policy Drivers</u></th> </tr> </thead> <tbody> <tr> <td data-bbox="562 799 1070 1034"> Minerals Core Strategy Policy MCS1B and Policy MCS7 MPS1: Planning and Minerals PPG15: Planning and the Historic Environment PPG16: Archaeology and Planning CBI Archaeological Investigations Code of Practice for Mineral Operators </td> <td data-bbox="1070 799 1720 1034"> Mineral Extraction and Archaeology: A Practice Guide Draft South West Regional Spatial Strategy <u><i>Avebury World Heritage Site Management Plan (English Heritage)</i></u> Comments received from previous consultations SA/SEA report. </td> </tr> </tbody> </table> <p>“</p>	<u>Policy Drivers</u>		Minerals Core Strategy Policy MCS1B and Policy MCS7 MPS1: Planning and Minerals PPG15: Planning and the Historic Environment PPG16: Archaeology and Planning CBI Archaeological Investigations Code of Practice for Mineral Operators	Mineral Extraction and Archaeology: A Practice Guide Draft South West Regional Spatial Strategy <u><i>Avebury World Heritage Site Management Plan (English Heritage)</i></u> Comments received from previous consultations SA/SEA report.	To provide clarity on the Policy drivers for MDC7
<u>Policy Drivers</u>							
Minerals Core Strategy Policy MCS1B and Policy MCS7 MPS1: Planning and Minerals PPG15: Planning and the Historic Environment PPG16: Archaeology and Planning CBI Archaeological Investigations Code of Practice for Mineral Operators	Mineral Extraction and Archaeology: A Practice Guide Draft South West Regional Spatial Strategy <u><i>Avebury World Heritage Site Management Plan (English Heritage)</i></u> Comments received from previous consultations SA/SEA report.						
PC030	Paragraph 7.16	<p>Amend policy reference in 1st sentence to read:</p> <p>“Policy MDC40<u>9</u> encourages after-use proposals that benefit local communities...”</p>	To correct a typographical error.				

Wiltshire and Swindon Submission Draft Minerals Development Control Policies DPD Examination: Schedule of Proposed Changes

Ref No.	Document ref.	Proposed Change	Reason for Proposed Change									
PC031 (PC013)	Paragraph 8.3	<p>Insert new sentence at end of paragraph to read:</p> <p><u>“All indicators and associated targets and thresholds for review will be measured on an annual basis for the period 1st April to 31st March, and reported each year in the Councils Annual Monitoring Reports.”</u></p>	To provide clarity on the Councils’ approach to policy monitoring									
PC032 (PC014)	Page 36, first indicator	<p>Amend to read:</p> <p>“Number of developments permitted that result in aggregates landbank greater than 7 year minimum <u>Landbank of permitted reserves for sand and gravel</u>”</p>	To ensure consistency across the document									
PC033	Chapter 8; page 37, Policy MDC4	<p>Amend the monitoring and implementation arrangements for Policy MDC4:</p> <p>Policy MDC4 provides criteria that will allow non-minerals development to proceed within MSAs/MCAs. It is essential for the delivery of this policy that the advice of the <u>respective</u> MPA is taken into account in determining applications for non-mineral development in MSAs/MCAs. <u>Essentially, the process of development management requires policy and development control officers to communicate effectively in order to ensure that mineral resources are not needlessly sterilised by development such as housing and employment uses. Further advice on this matter can be found with the Minerals Core Strategy and on request from the respective Councils.</u></p> <table border="1"> <thead> <tr> <th>Indicator</th> <th>Target</th> <th>Threshold for Review</th> </tr> </thead> <tbody> <tr> <td>Number of applications for non-minerals development within MSAs/MCAs</td> <td>n/a</td> <td>n/a</td> </tr> <tr> <td>Number of applications for no-minerals development within MSAs/MCAs permitted contrary to advice of the MPA</td> <td>0%</td> <td>20% of Total applications received</td> </tr> </tbody> </table>	Indicator	Target	Threshold for Review	Number of applications for non-minerals development within MSAs/MCAs	n/a	n/a	Number of applications for no-minerals development within MSAs/MCAs permitted contrary to advice of the MPA	0%	20% of Total applications received	<p>To amend the monitoring and implementation arrangements for Policy MDC4 in line with wider proposed changes relating to the change in governance arrangements in Wiltshire and the lack of need for Mineral Consultation Areas (MCAs) in unitary council areas.</p> <p>The proposed amendments to the targets and thresholds for review reflect similar changes made to other policy areas.</p>
Indicator	Target	Threshold for Review										
Number of applications for non-minerals development within MSAs/MCAs	n/a	n/a										
Number of applications for no-minerals development within MSAs/MCAs permitted contrary to advice of the MPA	0%	20% of Total applications received										

Wiltshire and Swindon Submission Draft Minerals Development Control Policies DPD Examination: Schedule of Proposed Changes

Ref No.	Document ref.	Proposed Change	Reason for Proposed Change
PC034 (PC015)	Page 38, first indicator	Amend target to read “0% <u>100%</u> ” and amend threshold for review to read “20% <u>80%</u> ”	To ensure consistency across the document
PC035 (PC016)	Page 38, second indicator	Amend indicator to read “ Number Percentage of applications for minerals development that lie adjacent to or within an AONB or adjacent to the New Forest National Park, that are informed by the relevant management plan” Amend target to read “n/a <u>100%</u> ” and amend threshold for review to read “n/a <u>80%</u> ”	To ensure consistency across the document
PC036 (PC017)	Page 38, second table (Policy MDC6) first and third indicators	For both indicators under Threshold for Review, amend to read: “20% <u>of total applications received</u> ”	To provide clarity on the Councils’ approach to policy monitoring
PC037 (PC018)	Page 39, first table, third indicator	Under Threshold for Review, amend to read: “20% <u>of total applications received</u> ”	To provide clarity on the Councils’ approach to policy monitoring
PC038 (PC019)	Page 39, second table, second and third indicators	Under Threshold for Review, amend to read: “80% <u>of total applications received</u> ”	To provide clarity on the Councils’ approach to policy monitoring
PC039 (PC020)	Page 39, second table, third indicator	Under Threshold for Review, amend to read: “20% <u>of total applications received</u> ”	To provide clarity on the Councils’ approach to policy monitoring

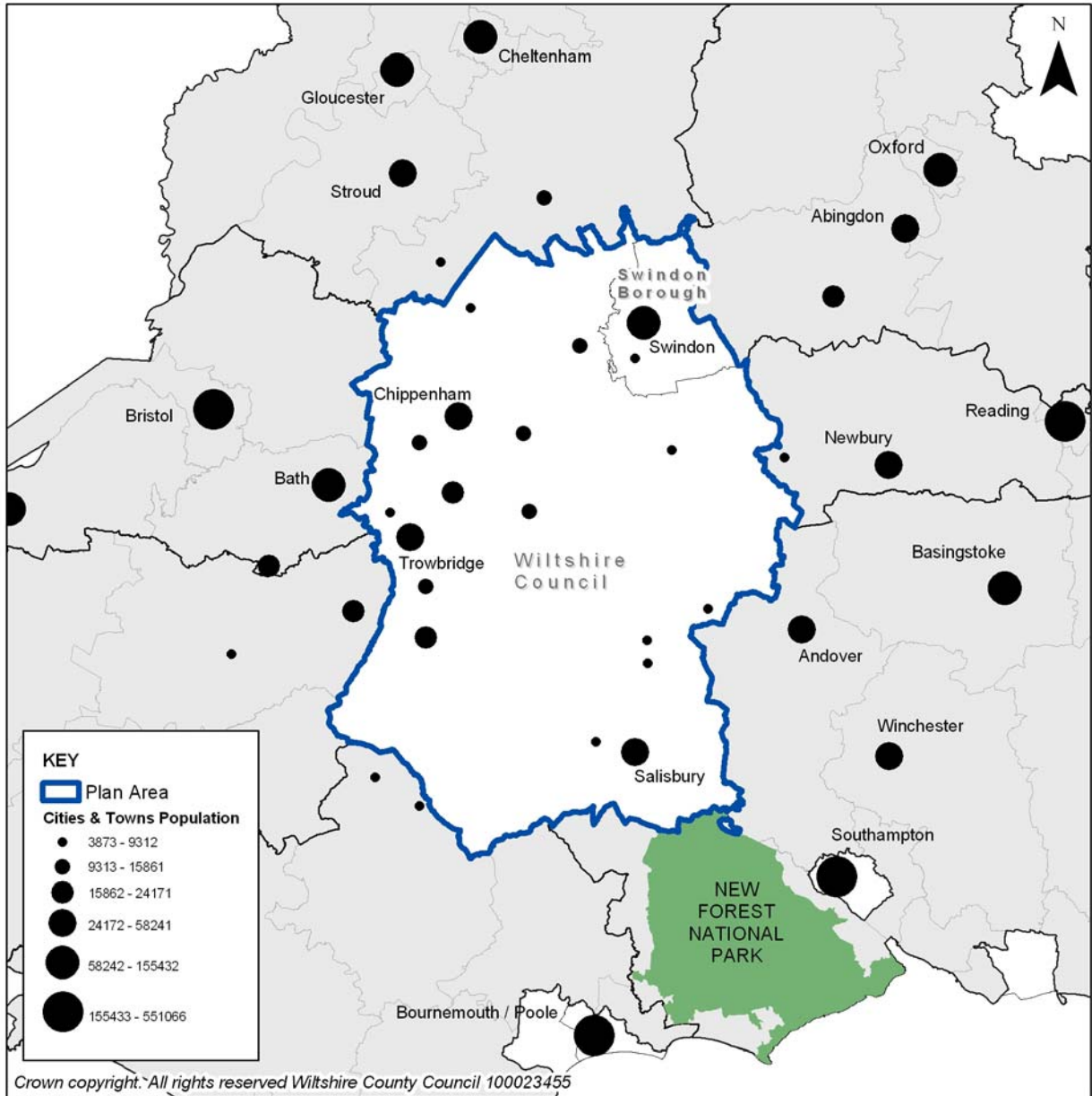
Wiltshire and Swindon Submission Draft Minerals Development Control Policies DPD Examination: Schedule of Proposed Changes

Ref No.	Document ref.	Proposed Change	Reason for Proposed Change			
PC040 (PC021)	Page 40, first table, all indicators	Under Threshold for Review, amend to read: “.. <u>of total applications received</u> ”	To provide clarity on the Councils’ approach to policy monitoring			
PC041 (PC022)	Page 40, first table	Insert new indicator to read: <table border="1" style="margin-left: auto; margin-right: auto;"> <tr> <td style="text-align: center;"><u>Percentage of applications for minerals development permitted where the proposed after-use will benefit the local and/or wider community.</u></td> <td style="text-align: center;"><u>100%</u></td> <td style="text-align: center;"><u>80% (of total applications received)</u></td> </tr> </table>	<u>Percentage of applications for minerals development permitted where the proposed after-use will benefit the local and/or wider community.</u>	<u>100%</u>	<u>80% (of total applications received)</u>	To ensure consistency across the document
<u>Percentage of applications for minerals development permitted where the proposed after-use will benefit the local and/or wider community.</u>	<u>100%</u>	<u>80% (of total applications received)</u>				
PC042 (PC024)	Page 43, Glossary of Terms	Before The Planning and Compulsory Purchase Act 2004 insert new term to read: “ Mineral Waste - Any material that arises as a residual product of extraction and processing of primary mineral resources that is not reused or utilized as a resource.”	To provide clarity on the Councils’ definition of mineral waste			
PC043 (PC023)	Page 44, Glossary of Terms	Delete reference to “Settlement Protection Zones”	To ensure consistency across the document			
PC044 (PC025)	Whole Document	Additional changes to reflect new Unitary status of Wiltshire Council as of April 2009 (please refer to Appendix 1(text) and Appendix 2 (Figure 1)	n/a			
PC045 (PC026)	Whole Document	Additional changes to reflect the imminent adoption of the South West Regional Spatial Strategy (please refer to Appendix 3)	n/a			
PC046	Whole Document	Any consequential amendments required to paragraph or footnote numbering.	n/a			

Appendix 1: Additional Proposed Changes to reflect new Unitary Status of Wiltshire Council

Ref No.	Document ref.	Proposed Change
PC044 (a) (PC025 (a))	Page 4, paragraph 1.2	Amend to read: "This document has been prepared by Wiltshire County Council and Swindon Borough Council (the Councils)..."
PC044 (b) (PC025 (b))	Page 4, paragraph 1.3	Amend to read: "In the interests of brevity the Councils have prepared a separate Evidence Base (available on the Wiltshire County Council website..."
PC044 (c) (PC025 (c))	Page 6	Delete heading " Who Does What? "
PC044 (d) (PC025 (d))	Page 6, paragraph 2.1	Delete paragraph
PC044 (e) (PC025 (e))	Page 6, paragraph 2.2	Delete paragraph
PC044 (f) (PC025 (f))	Page 8, footnote	Amend to read: "2. Wiltshire County Council has produced specific Planning Enforcement Policy Guidance..."
PC044 (g) (PC025 (g))	Page 42, Glossary of Terms, "LDD"	Amend second sentence of definition of LDD to read: "Wiltshire County <u>Council</u> , and Swindon Borough Council are responsible for producing..."
PC044 (h) (PC025 (h))	Page 42, Glossary of Terms, "LDS"	Amend to read: " Local Development Scheme – sets out a three year programme for the preparation of LDDs for District and Borough Councils. Wiltshire County Council (and Swindon Borough) has prepared a Minerals and Waste <u>Local Development Scheme, (the details of which in relation to minerals and waste DPDs have been incorporated into Swindon Borough Council's Local Development Scheme to reflect current joint working arrangements between the two Councils.)</u> "
PC044 (i) (PC025 (i))	Page 42, Glossary of Terms, "MWDF"	Amend to read: " Minerals and Waste Development Framework – The County and Borough equivalent of the Local Development Framework dealing specifically with policies for minerals and waste development, <u>usually prepared at the county / former county level.</u> "
PC044 (j) (PC025 (j))	Page 44, Glossary of Terms "The Development Plan"	Amend bullet point (ii) to read: "(ii) Development Plan Documents prepared by the Borough, District and County <u>and Unitary</u> Council."

Appendix 2: PC044 (k) - Proposed Changes to Figure 1 on page 5



Wiltshire and Swindon Submission Draft Minerals Development Control Policies DPD
Examination: Schedule of Proposed Changes

Appendix 3: Additional changes to reflect the imminent adoption of the South West Regional Spatial Strategy

Ref No.	Document ref.	Proposed Change
PC045 (a) (PC026 (a))	Page 11, policy drivers box	Amend ninth bullet to read: “ Draft South West Regional Spatial Strategy”
PC045 (b) (PC026 (b))	Page 14, policy drivers box	Amend fifth bullet to read “ Draft South West Regional Spatial Strategy”
PC045 (c) (PC026 (c))	Page 16, policy drivers box	Amend third bullet to read “ Draft South West Regional Spatial Strategy”
PC045 (d) (PC026 (d))	Page 18, policy drivers box	Amend third bullet to read “ Draft South West Regional Spatial Strategy”
PC045 (e) (PC026 (e))	Page 21, policy drivers box	Amend fourth bullet to read “ Draft South West Regional Spatial Strategy”
PC045 (f) (PC026 (f))	Page 24, policy drivers box	Amend seventh bullet to read “ Draft South West Regional Spatial Strategy”
PC045 (g) (PC026 (g))	Page 26, policy drivers box	Amend seventh bullet to read “ Draft South West Regional Spatial Strategy”
PC045 (h) (PC026 (h))	Page 29, policy drivers box	Amend fourth bullet to read “ Draft South West Regional Spatial Strategy”
PC045 (i) (PC026 (i))	Page 34, policy drivers box	Amend eighth bullet to read “ Draft South West Regional Spatial Strategy”
PC045 (j) (PC026 (j))	Page 35, policy drivers box	Amend fourth bullet to read “ Draft South West Regional Spatial Strategy”
PC045 (k) (PC026 (k))	Page 45, first row of table at bottom of page	Amend to read: “ Draft Regional Spatial Strategy for the South West”