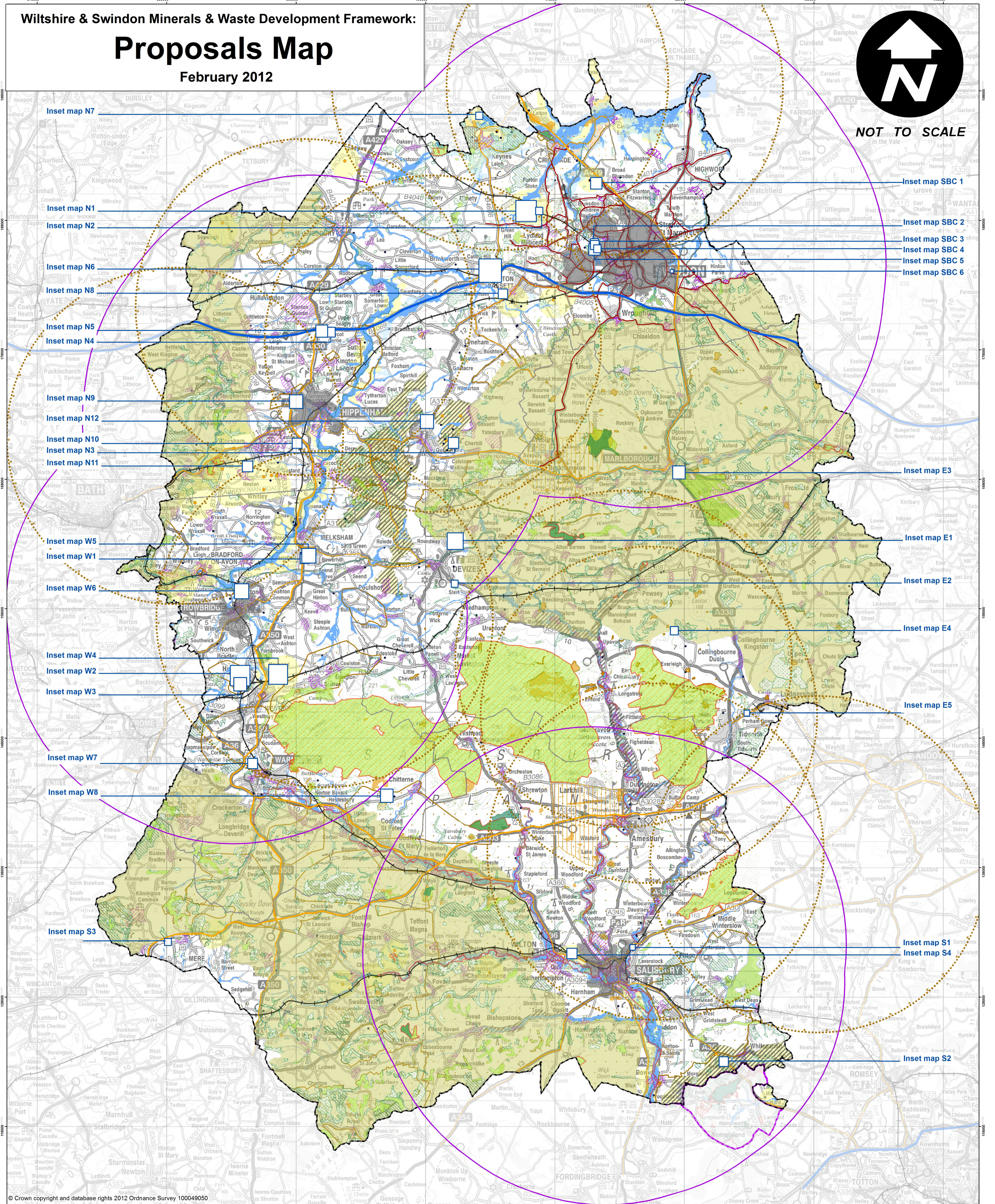


Proposals Map

February 2012



NOT TO SCALE



<p>Wiltshire and Swindon Border</p> <p>New Forest National Park Authority (WCS3; WDC7; MDC5)</p> <p>Principal Settlements (formerly known as SSCTs)</p> <p>Former District Areas</p> <p>Landscape (WCS2; WDC7; MDC5)</p> <p>AONB</p>	<p>Biodiversity/Geodiversity (WDC8; MDC8)</p> <p>SACs</p> <p>SPAs</p> <p>National Nature Reserves</p> <p>SSSIs</p> <p>RIGS</p> <p>Local BAP Habitats and Species</p> <p>County Wildlife Sites</p> <p>Local Nature Reserves</p> <p>Great Western Community Forest</p>	<p>Historic Environment and Cultural Heritage (WDC9; MDC7)</p> <p>Scheduled Monuments</p> <p>Registered Battlefields</p> <p>Conservation Areas</p> <p>Historic Parks and Gardens</p> <p>Listed Buildings**</p> <p>Locally Important Archaeological Sites</p> <p>World Heritage Site (WDC4; WDC9)</p>	<p>Water Environment (WDC2; WDC3; MCS7; MCS10; MDC3)</p> <p>Flood Zone 2</p> <p>Flood Zone 3</p>	<p>Transportation (WCS2; WDC5; WDC11; MCS9; MDC8)</p> <p>Freight-Motorways</p> <p>Wiltshire Strategic Lorry Routes</p> <p>Wiltshire Local Lorry Routes</p> <p>Railway</p> <p>Swindon HGV Route Network (WCS2; WDC2; MCS9; MDC8)</p>	<p>Minerals Specific</p> <p>Rail Aggregate Depot (MCS6)</p> <p>Minerals Sites (MCS2; MCS6)</p> <p>Mineral Resource Zones (MCS1; MCS6)</p> <p>Minerals Safeguarding Areas (MCS6; MDC4)</p> <p>Minerals Site Allocations (MCS6)</p> <p>Birdstrike Buffer Zone (MCS10; MDC10)</p>	<p>Waste Specific</p> <p>Principal Settlement 16km Buffer Zones (WCS2; MCS2)</p> <p>Existing Waste Sites (WCS3; WCS4; MCS2)</p> <p>Airfield Safeguarding Areas (WDC6)</p> <p>Waste Inset Map Area</p>
--	---	---	---	--	---	--

© Crown copyright and database rights 2012 Ordnance Survey 100049050